

SUZUKI S40/SAVAGE TEAR DOWN GUIDE

[The CS-1 installation guides should be used as supplements to the videos found on our [Youtube Channel](#). There is no strict order to the build process, but it is highly recommended that you read through all of the [guides](#) and watch all the videos before beginning your project. The Clymer manual for the Suzuki S40/Savage is also a good reference, and can be used in the future for service and maintenance. Another great resource is the [Suzuki Savage forum](#).]

This guide covers the tear down process of a stock Suzuki S40/Savage. The tear down video can be found [here](#).

A basic motorcycle lift is highly recommended for the tear down and build process. **Drain the fuel and disconnect the battery before disassembly.**

Many of the parts you remove from your stock Suzuki S40/Savage can be discarded or sold, but make sure you read all the way through the [CS-1 Guides](#) and watch all the [videos](#) so you know which parts you must keep!

Remove the seat by unscrewing the two bolts under the rear of the seat:



Unscrew the two bolts at the rear of the tank. **Save the rubber grommets:**



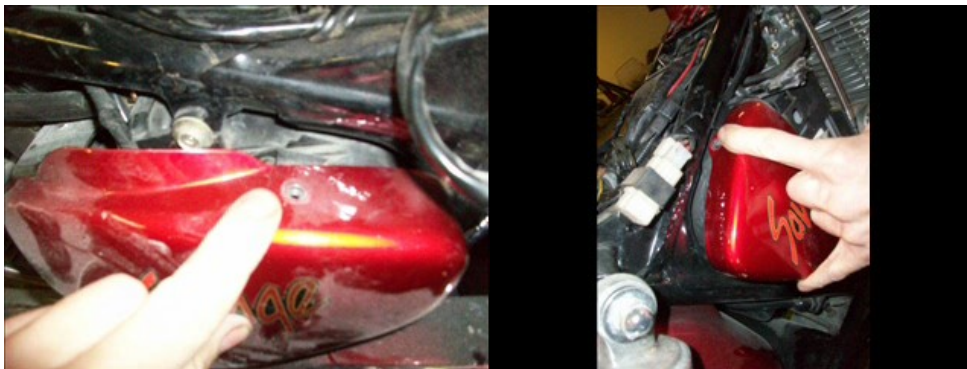
Remove the fuel line from the fuel valve on the tank. Disconnect the speedometer cable and electrical connections to the gauge cluster. Lift the tank off the frame:



Remove the gas cap, gauge cluster, and fuel valve before sending the tank to Ryca. **Make sure to keep the white plastic housing which holds the brights and turn signal indicator lights:**



Remove the side covers. There is a screw on the top and on the side:



Remove the rectifier from the rear fender. **Keep the stock screws:**



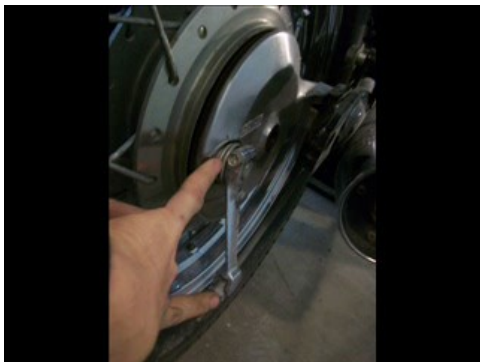
Disconnect the electrical connectors running through the rear fender.
Remove the belt pulley guard:



Remove the belt guard. It's held on by two bolts attached to the swingarm and two screws under the pulley guard:



Remove the battery box. It's held on by a screw at the top and screws at the bottom.
Remove the brake rod:



Loosen the lock nuts, pull the axle out, and remove the rear wheel. With the bike on a lift, it's easier if you take the shocks off first:



Remove the rubber dampers from the wheel hub and cut the spokes off before sending to Ryca:



Remove the keyswitch.

Remove the hand grips (cut them off if necessary) and the handlebar controls:



Remove the handlebars and risers:



Remove the carb:



Remove the air box (much easier if the carb is removed first):



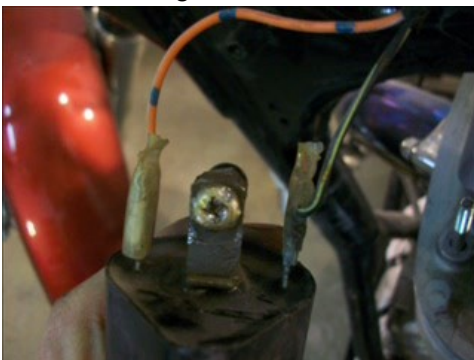
Remove the chrome valve covers and breather tube. You can cut off the right side cover bolt:



Remove the decompression cable and the solenoid:



Remove the ignition coil:



Remove the exhaust header and muffler:



Remove the muffler bracket.

Remove the brake line by loosening the nut on the swingarm:



Remove the brake light switch.

Remove the shifter assembly after unscrewing the inner bolt:



Remove the shift rod and shift lever (held on by a c-clip):



Remove and disassemble the sidestand mount:

